

ENTBOC25

Aprèsport European Mountain Bike Orienteering Championships 2025

Aprèsport European Junior And Youth MTB Orienteering Championships 2025

CX80 Mountain Bike Orienteering World Cup, Round 1

14-18 MAY 2025
VILNIUS

TEAM OFFICIALS' MEETING

SPRINT



ROLL CALL



AUSTRIA



BULGARIA



CZECHIA



DENMARK



ESTONIA



FINLAND



FRANCE



GERMANY



GREAT BRITAIN



ITALY



LATVIA



LITHUANIA



POLAND



PORTUGAL



SLOVAKIA



SPAIN



SWEDEN



SWITZERLAND



TURKIYE



UKRAINE



UNITED STATES

IMPORTANT – GPS UNITS

**ALL ELITE RIDERS MUST CARRY
GPS UNITS ON THEIR ARM.
THIS IS DUE TO TV BROADCAST AND
REDUCED ACCURACY WHEN UNIT IS
PLACED IN THE POCKET**

BIKE STORAGE OPERATING HOURS

	Morning	Evening
MAY 16 (FRI)	until 10:00	13:00 -
MAY 17 (SAT)	until 10:00	13:00 -
MAY 18 (SUN)	until 10:00	15:00 -
MAY 19 (MON)	until 10:00	

Bikes left after 10:00 are not guarded

NO BIKES IN THE HOTEL! PLEASE

OTHER REMINDERS

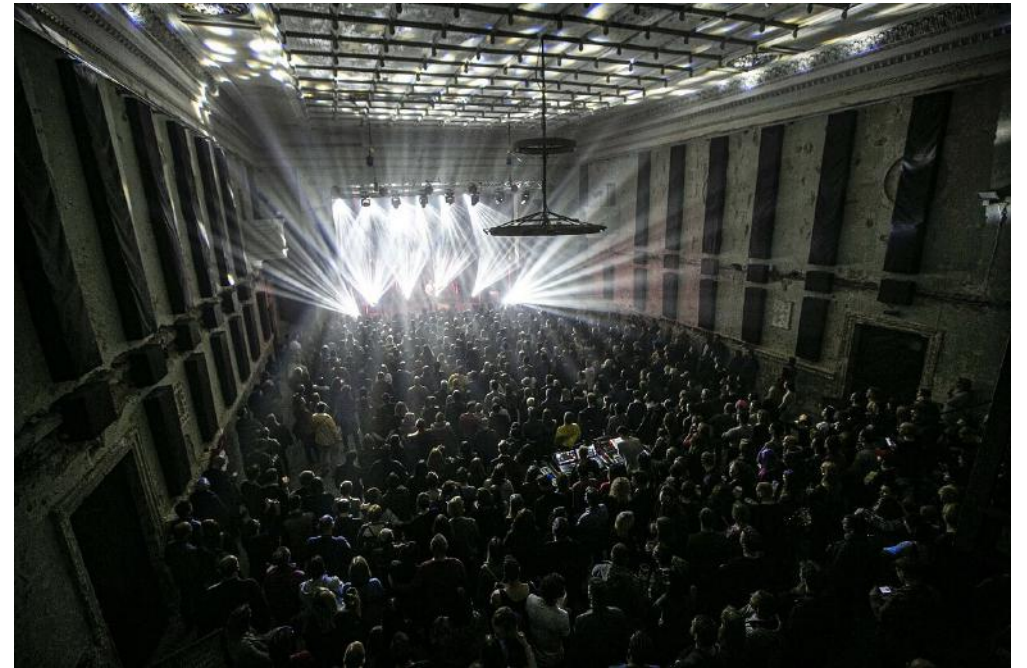
**NO ENTRY TO THE RACE ARENA BEFORE
THE RELEASE FROM PRE-START!**

**Please remind athletes to check that they
have a correct map before the start!**

BANQUET

Those who are preparing to celebrate and share the emotions of these five /six /seven days in Vilnius, but still keeping this in secret from us, please come today to the office and give us a hint 😊

Where? **Club „KABLYS“**, Address: Kauno g. 5, Vilnius,
When? **19:00 on Sunday**

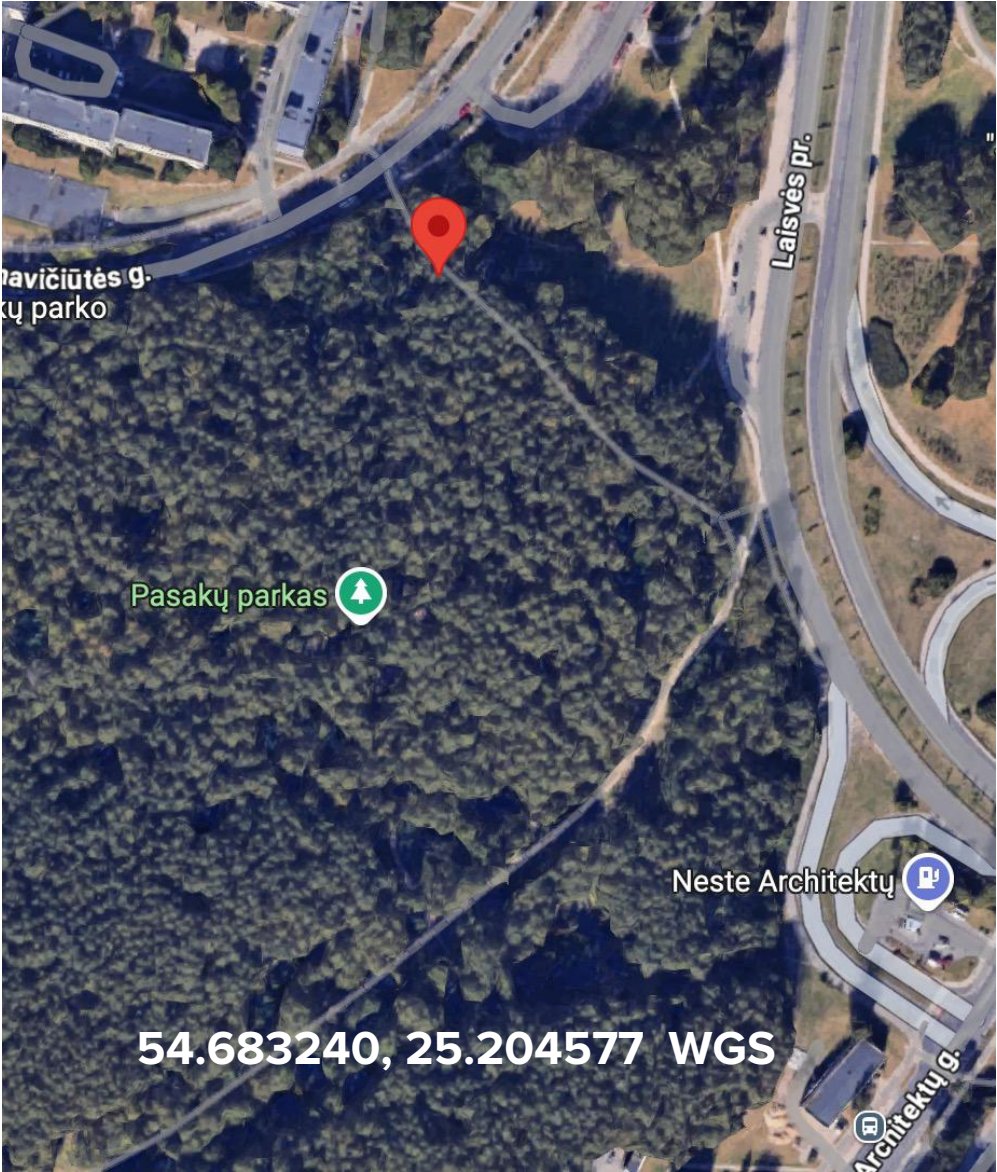


SPRINT

TIME SCHEDULE

Time	Event activity
10:00	The First start in EYJMTBOC
10:00	Start Quarantine closes. GPS ON
11:05	The First start in EMTBOC, LIVE TV starts
12:10	Time limit for complains for EYJMTBOC
12:15	Flower Ceremony EYJMTBOC Delayed YGWS2024 medal ceremony
13:25	Estimated last start – End of Quarantine
13:50	Estimated last Finish
14:00	Deadline for RELAY team allocations
14:15	Start of Open and World Master Series event
14:15	Time limit for complains
14:15	Flower ceremony EMTBOC
14:30	Planting of Flowers in Pasakų Parkas
17:30	Award Ceremonies in Europa square
19:30	Team Officials’ meeting in the Event Centre

FLOWER PLANTING LOCATION



QUARANTINE AND PRE-START PROCEDURE

QUARANTINE:

All participants should start from Start Quarantine.

Quarantine is located 5,7 km from the Event Centre and 2,8 km from Finish Arena.

All participants should head directly to quarantine.

Please follow the access route marked by.



signs.

Organisers will carry bags from Quarantine to Finish area. Bags tent will be located closer to Food tent

PRE - START PROCEDURE:

Pre-start – from the Start quarantine, **3 min** before the actual start time (Pre-start equals -3 minutes mark)

distance to start - 100 m

There will be a tablet showing your start time slot. Path from the pre-start to the start will be marked by red-white stripes and direction marks. Maps of the route will be available in quarantine

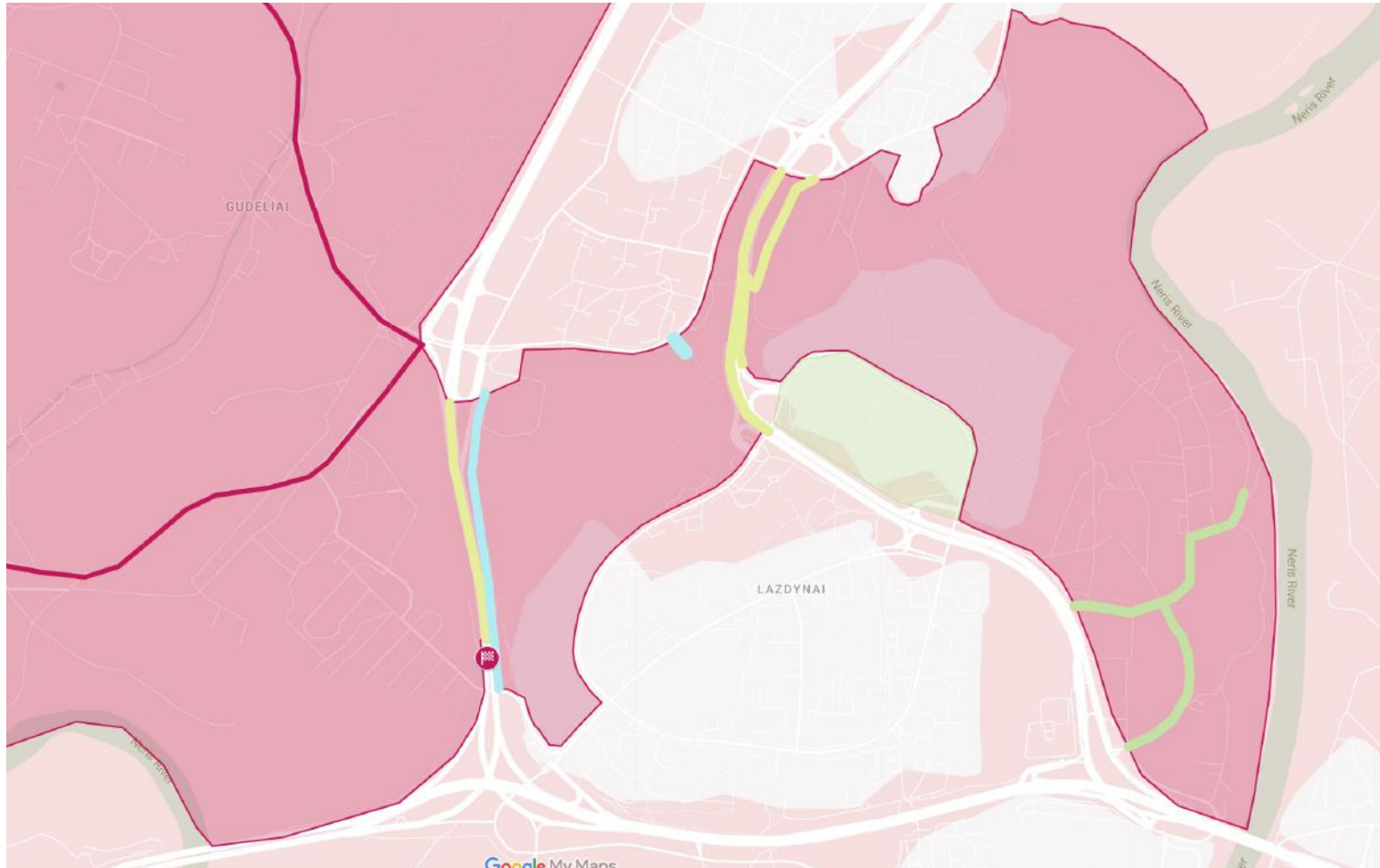
Please be in Quarantine at least 15 minutes before your Pre-Start to have sufficient time to collect and fix the GPS device.

The distance from time start to map start is 90 m



EMBARGOED AREA

(UPDATE2 – allowed routes and no more embargoed areas are marked in green
Allowed routes From May 17 14:30 till 16:00 are marked in blue



FULL UPDATED EMBARGO MAP:



START PROCEDURE

Individual start with start interval of 2 minutes.

Tablets on the start corridor will display name of participants.

Maps allowed 1 minute before the start.

Competitors are responsible to check that they have the correct map!

The distance from time start to map start is 90 m

MAPS AND COURSES

Maps will be printed on waterproof paper, **two-sided**.

Both maps: Scale 1:5 000,
 Contours 5 m,
 Dimensions – 300 x 300 mm.

Start on the second map are on the place of the last control on the first map and marked with a symbol 715:

	Length (optimal) km	Total climb m	Number of controls	Winning times min.
Women	6.8	150	23	20 - 25
Men	7.6	200	26	20 - 25
W20	5.4	150	19	16 - 20
M20	6.4	200	20	16 - 20
W17	4.8	125	16	15 - 20
M17	5.4	150	19	15 - 20



SPECIAL INFORMATION

MAP:

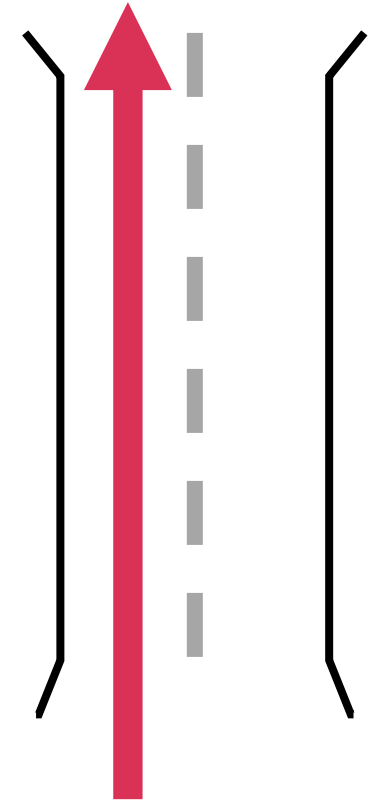
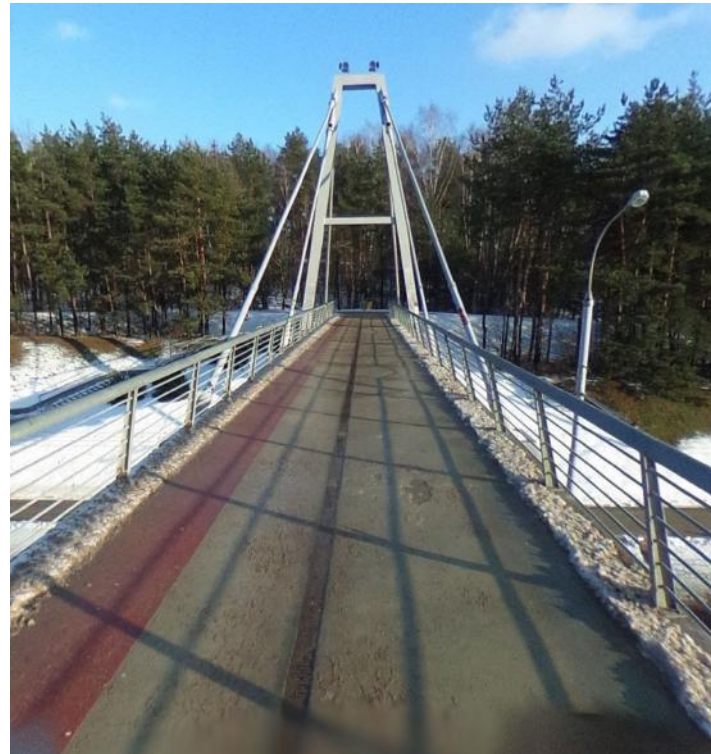
Special symbol for stars is used:



SPECIAL INFORMATION

There is a main road crossing over pedestrian bridge that will be divided by fences and tape.
Use the **LEFT** side of the bridge only!

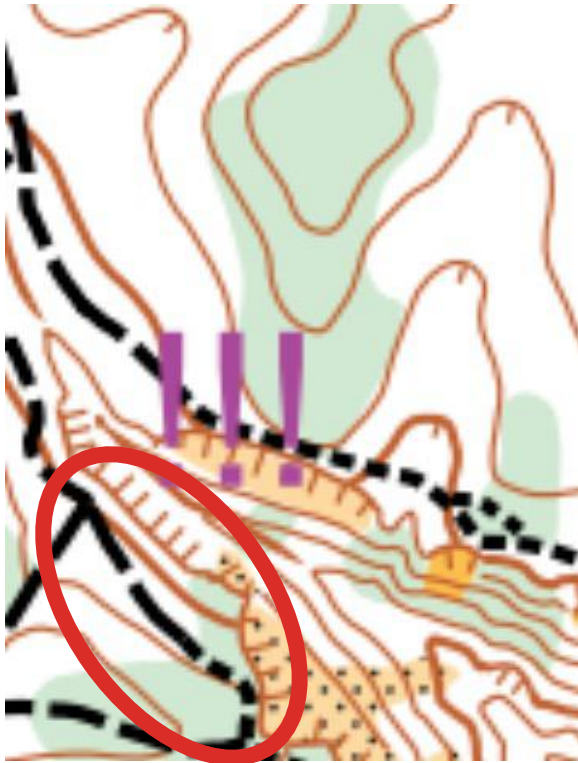
Mandatory route section follows the bridge!



SPECIAL INFORMATION

DANGEROUS PLACES:

MEN will have a possible root choice – a path near the sand-cliff, where a mistake can cost 10+ vertical meters. It is marked by the exclamation marks.



Before bridge crossing there is eroded path connection to paved pathway, The exposed curbstone can cause serious injuries if actual riding skills are not matching the expectations. Please do not underestimate!



SPECIAL INFORMATION

TV PRODUCTIONS:

As live TV production will start tomorrow, there will be cameras, also on podiums along the course. They are not marked on the map.

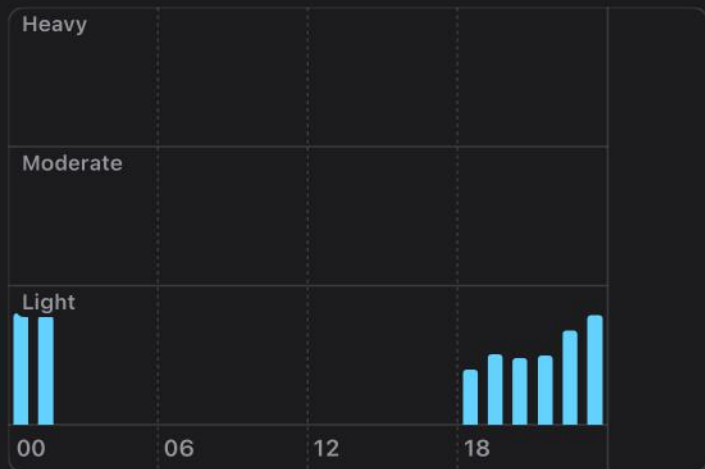
There will be also sponsor banners next to some controls.

Tomorrow is SATURDAY – please respect local residents, other pedestrians and pets!

4mm



Total for the day



Chance of Precipitation

Saturday's chance: 75 %



09:00		6 °C	3 m/s	7 m/s	0.2 mm/val.	1009 hPa	93 %	4 °C
10:00		6 °C	3 m/s	6 m/s	0.1 mm/val.	1009 hPa	92 %	4 °C
11:00		8 °C	4 m/s	7 m/s	0 mm/val.	1008 hPa	82 %	6 °C
12:00		11 °C	4 m/s	9 m/s	0 mm/val.	1008 hPa	67 %	11 °C
13:00		12 °C	4 m/s	10 m/s	0 mm/val.	1008 hPa	64 %	12 °C
14:00		13 °C	5 m/s	11 m/s	0 mm/val.	1008 hPa	49 %	13 °C
15:00		13 °C	5 m/s	11 m/s	0 mm/val.	1007 hPa	53 %	13 °C
16:00		13 °C	5 m/s	11 m/s	0 mm/val.	1007 hPa	59 %	13 °C
17:00		12 °C	5 m/s	11 m/s	0 mm/val.	1007 hPa	67 %	12 °C
18:00		11 °C	5 m/s	10 m/s	0 mm/val.	1007 hPa	75 %	11 °C

THANK YOU!

EMTBOC25 by Aprèsport

ALL WHO WONDER
ARE LOST.

MAY 14-18

VILNIUS